

S1200

WORKBENCH

S1200 is a certified and patented multi-tool dust-free emission workbench. The combination of ventilation and aspiration protects the operator from harmful dust. The machine can be equipped with a height adjustment system which makes it extremely ergonomic. S1200 can be configured with carders / brushing machines / polishing tool. S1200 is an ergonomic and configurable 4.0 workbench.



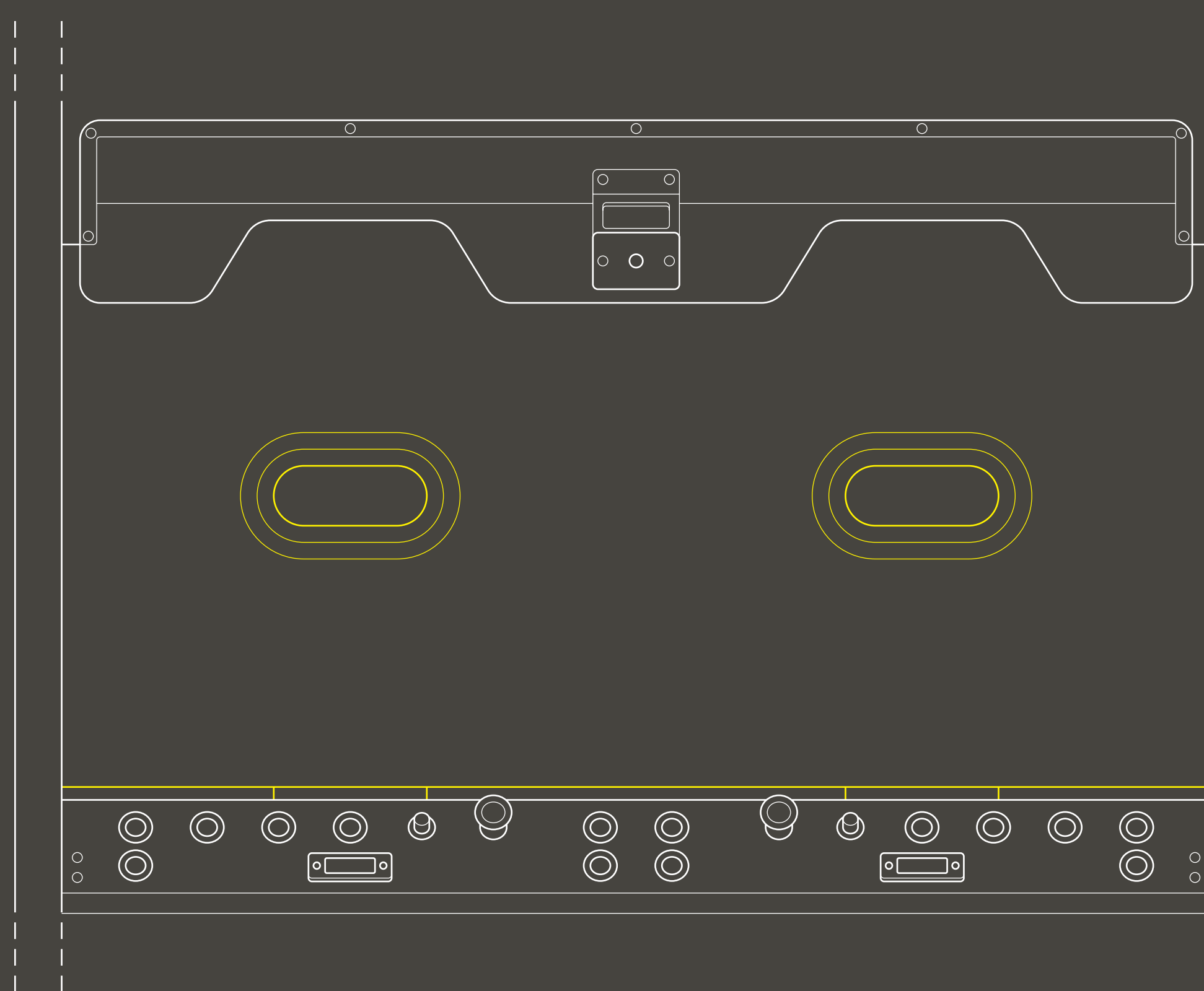
TECHNICAL SPECIFICATIONS

GENERAL FEATURES

- S-DUST patent | certified dust emissions
- Pneumatic self-cleaning
- Electric height adjustment 200 mm
- Weight 300kg in full optional configuration
- 2 asynchronous motors 1,5 Kw 2800 RPM with dedicated inverter
- Led lighting 1400 lumens white light
- Noise 68 Db
- Optional:
 - TELEMETRY | dust monitoring / suction efficiency
 - Auxiliary lights (1400 lumens per point - max 2 additional points)

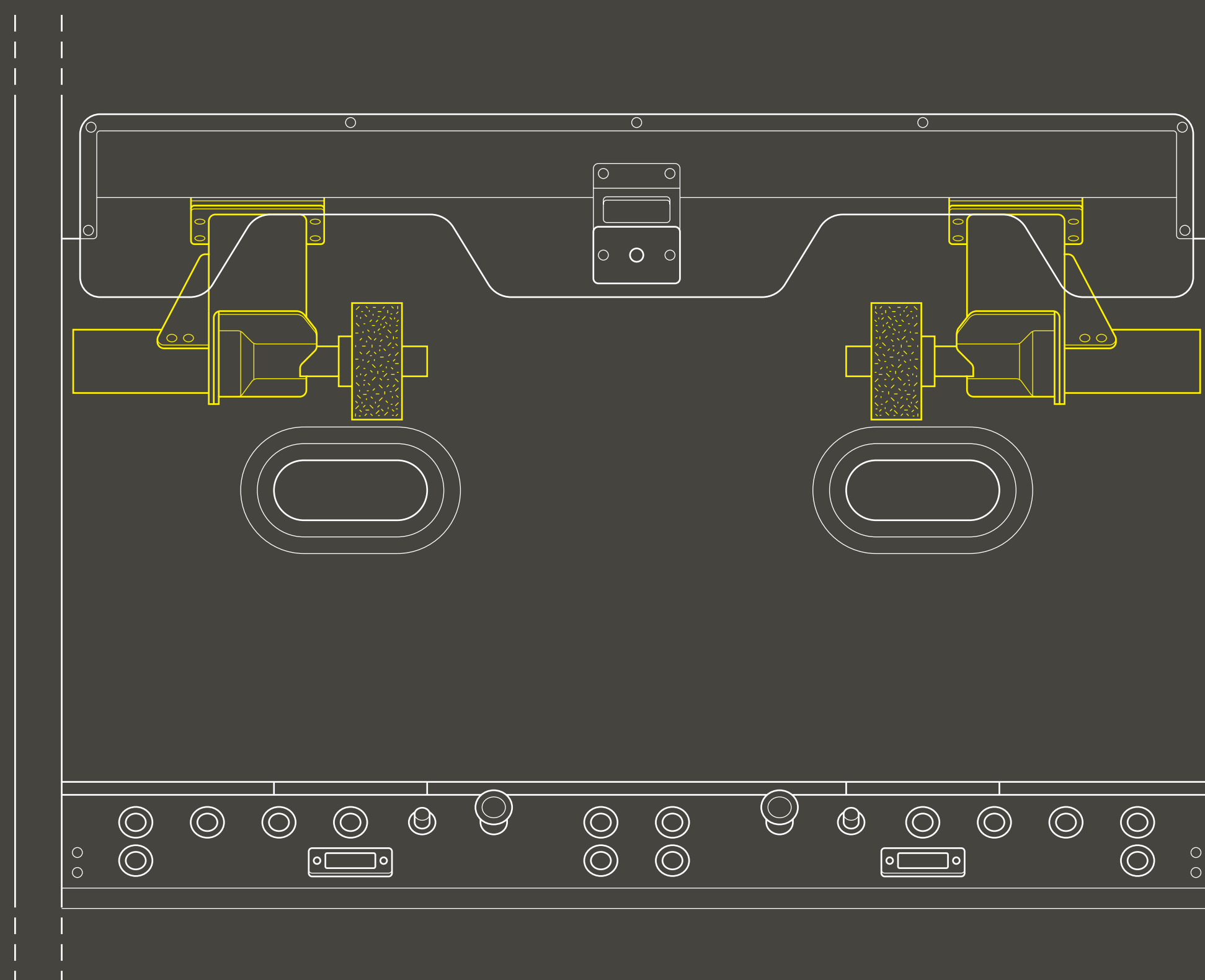
LAYOUT

TYPES OF LAYOUT



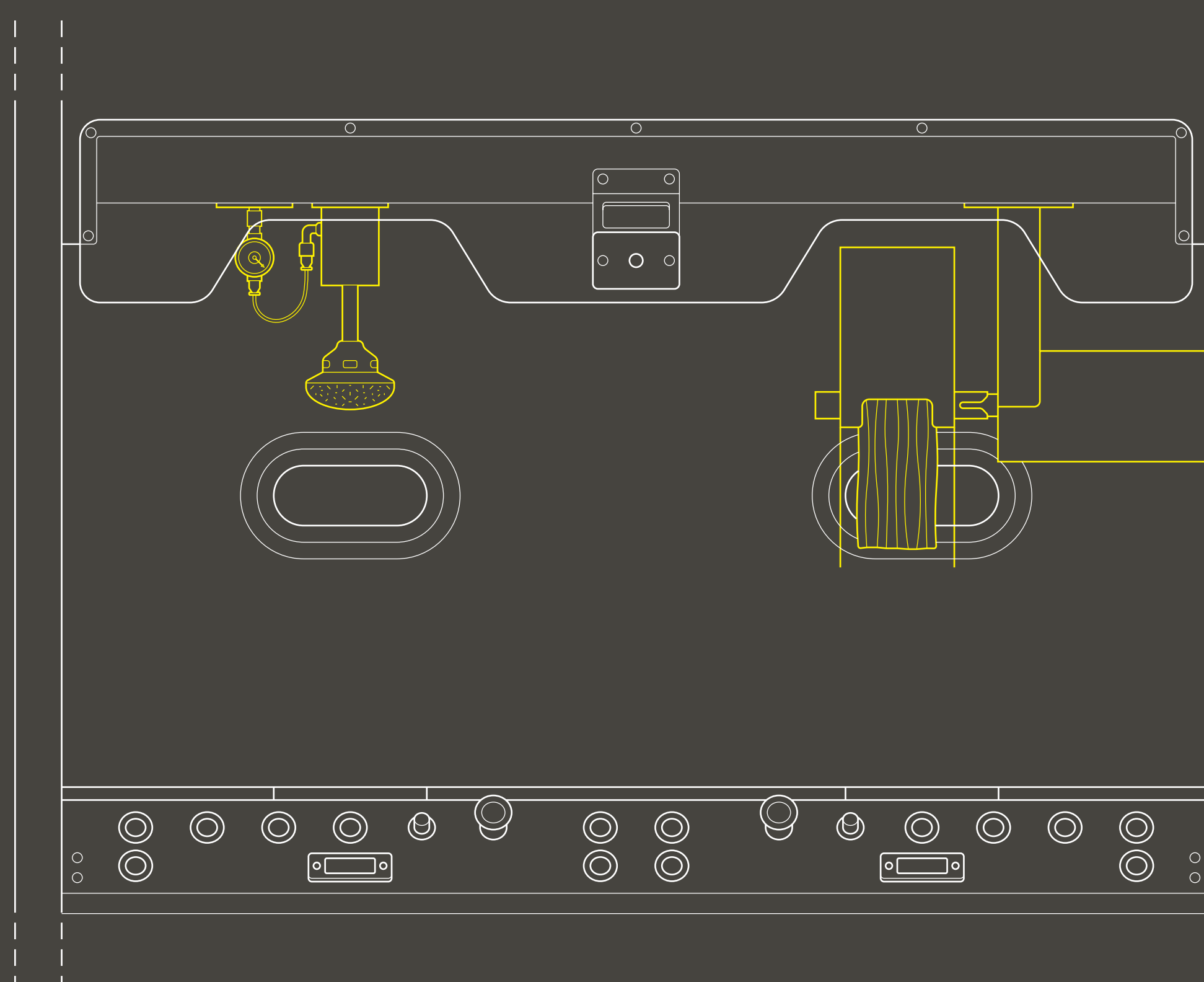
S1200

Suction cabin



S1200 C

Double carder

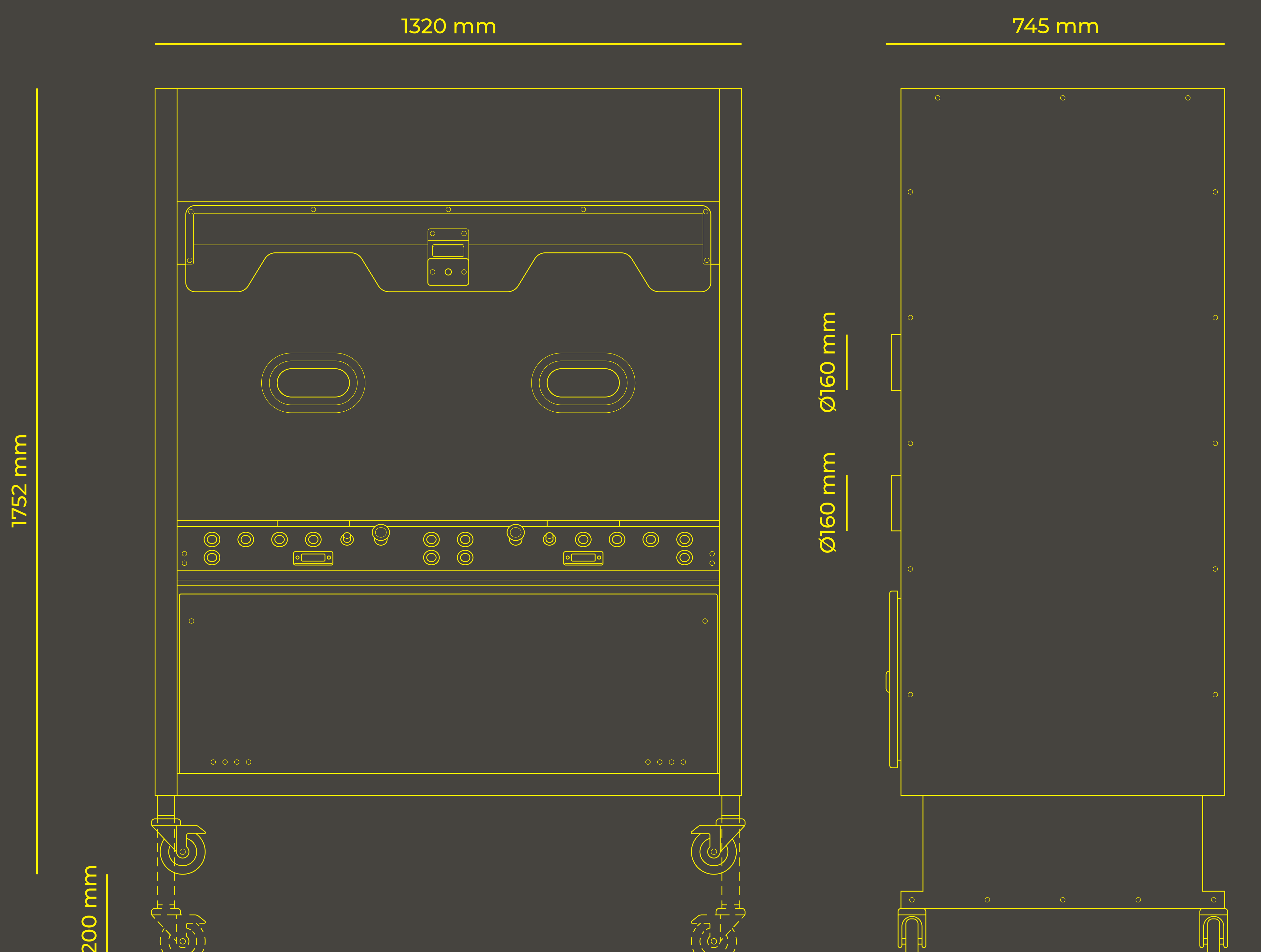


S1200 SP

Polishing tool Ø80 mm
Brushing machines Ø300 x 100 mm max

DIMENSIONS

OVERALL DIMENSIONS



FALMACH
a brand of SIGMA INGEGNERIA
Via Provinciale di Sant'Alessio, 1957
55100 Sant'Alessio Lucca (LU) | Italy
CF | P.IVA: 01690840507
REA: LU205835

T: +39 0583 186 1320
F: +39 0583 186 1321
W: falmach.com
E: info@falmach.com